

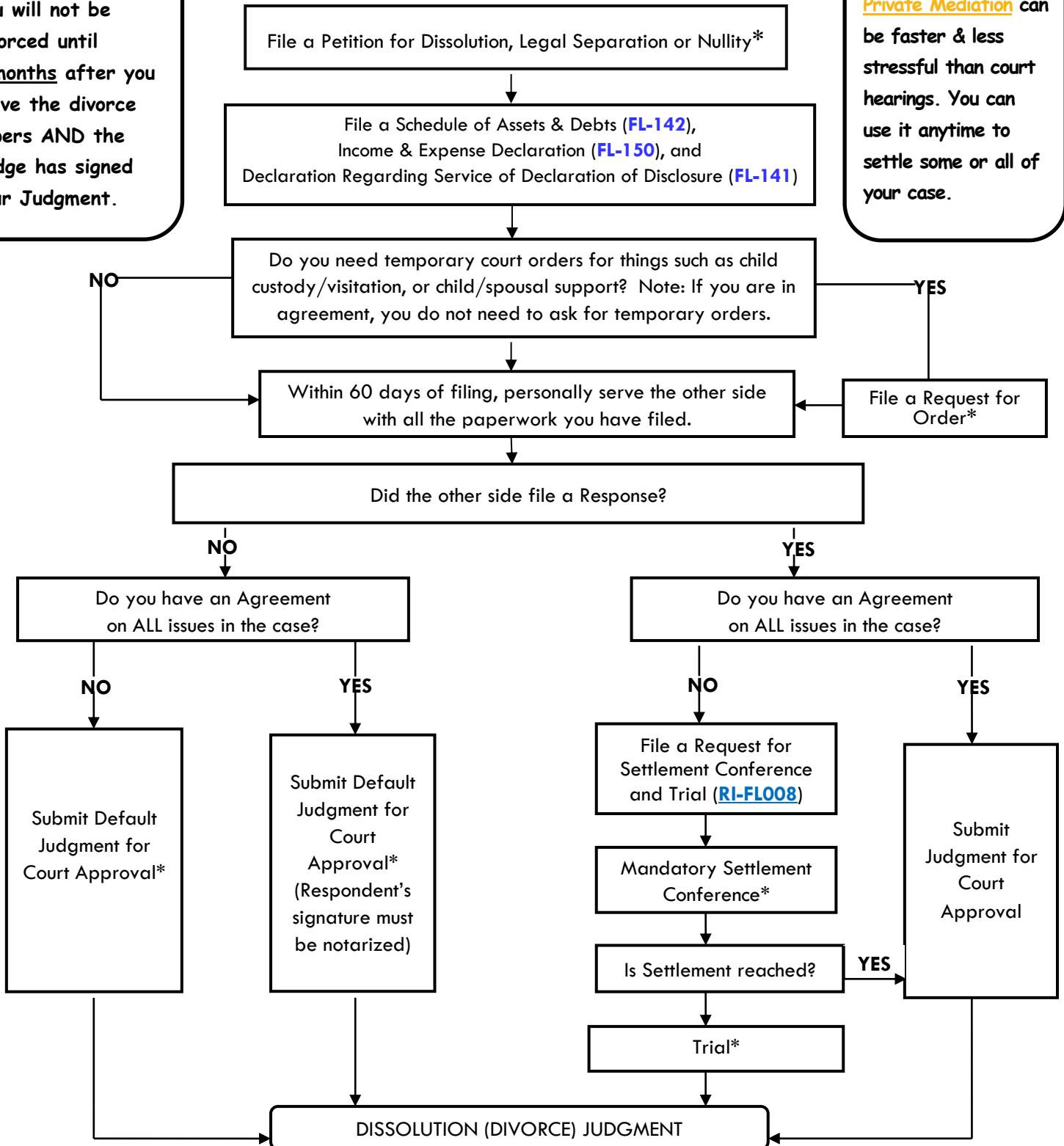
DIVORCE CASE FLOW CHART

(Dissolution, Legal Separation and Nullity)*

NOTE:

You will not be divorced until **6 months** after you serve the divorce papers AND the Judge has signed your Judgment.

Private Mediation can be faster & less stressful than court hearings. You can use it anytime to settle some or all of your case.



*Riverside Superior Court provides free Family Law Workshops and Form Packets for these steps in the process.

Form packets are available at:

www.riverside.courts.ca.gov/selfhelp/fl_packets.shtml

Workshop information is available at:

Riverside: www.riverside.courts.ca.gov/cal_rivfamlawworkshop.pdf

Hemet: www.riverside.courts.ca.gov/cal_hemetfamlawworkshop.pdf

Murrieta: www.riverside.courts.ca.gov/cal_swfamlawworkshop.pdf

Indio: www.riverside.courts.ca.gov/cal_indfamlawworkshop.pdf

This chart shows the basic outline of a divorce case. Please consult with an attorney for legal advice concerning your individual case. If you do not have an attorney, assistance is available at various court Family Law Assistance Centers, and at the court's website. For more information please see: www.riverside.courts.ca.gov/selfhelp/familylaw.shtml