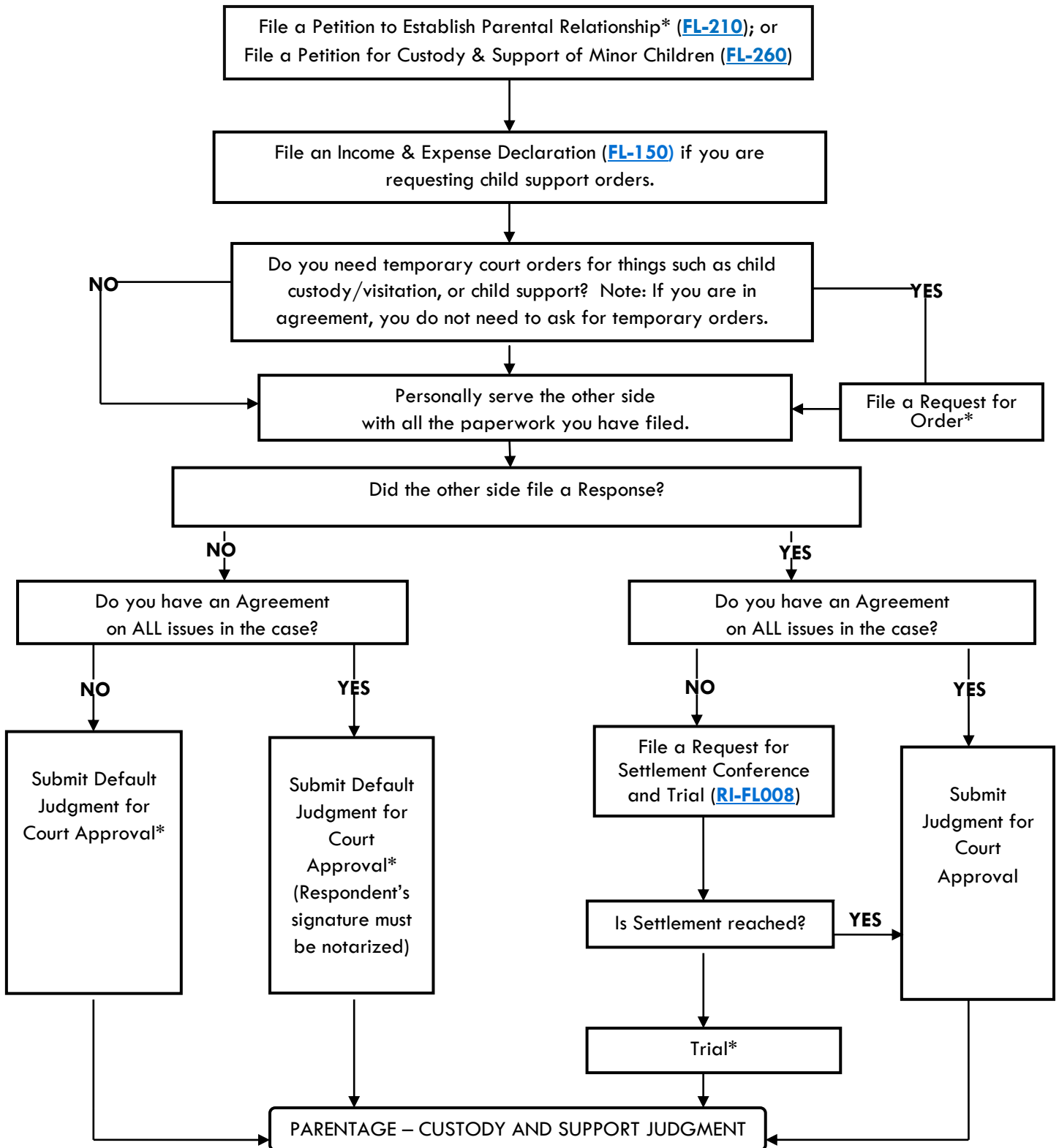


# PATERNITY CASE FLOW CHART

(Petition to Establish Parental Relationship; Petition for Custody & Support)



\*Riverside Superior Court provides free Family Law Workshops and Form Packets for these steps in the process.

**Form packets are available at:** [www.riverside.courts.ca.gov/selfhelp/fl\\_packets.shtml](http://www.riverside.courts.ca.gov/selfhelp/fl_packets.shtml)

**Workshop information is available at:** Riverside: [www.riverside.courts.ca.gov/cal\\_rivfamlawworkshop.pdf](http://www.riverside.courts.ca.gov/cal_rivfamlawworkshop.pdf)

Hemet/Murrieta: [www.riverside.courts.ca.gov/cal\\_hemetfamlawworkshop.pdf](http://www.riverside.courts.ca.gov/cal_hemetfamlawworkshop.pdf)

Indio: [www.riverside.courts.ca.gov/cal\\_indfamlawworkshop.pdf](http://www.riverside.courts.ca.gov/cal_indfamlawworkshop.pdf)

This chart shows the basic outline of a paternity case. Please consult with an attorney for legal advice concerning your individual case. If you do not have an attorney, assistance is available at various court Self-Help / Family Law Assistance Centers, and at the court's website. For more information please see: [www.riverside.courts.ca.gov/selfhelp/familylaw.shtml](http://www.riverside.courts.ca.gov/selfhelp/familylaw.shtml)